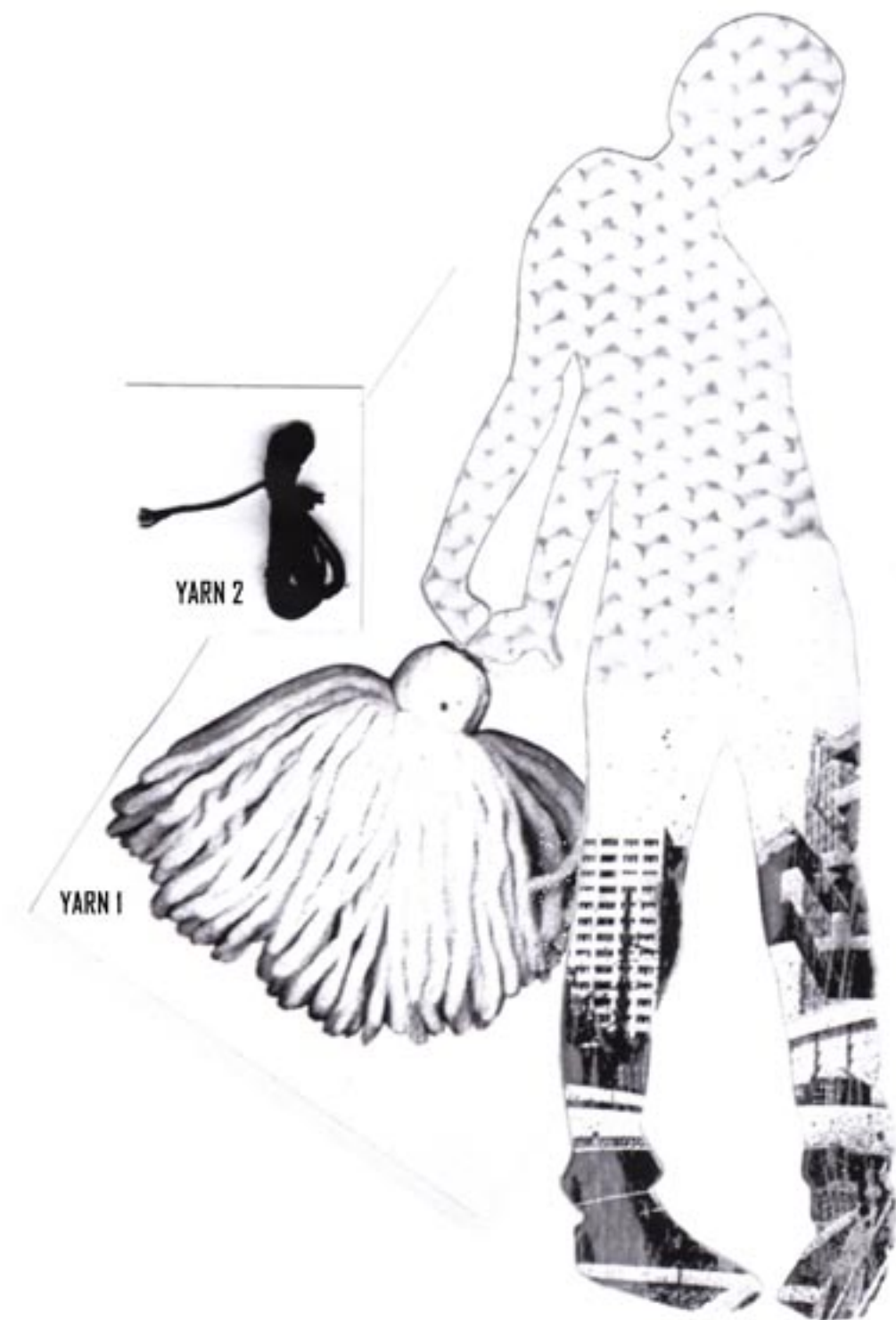
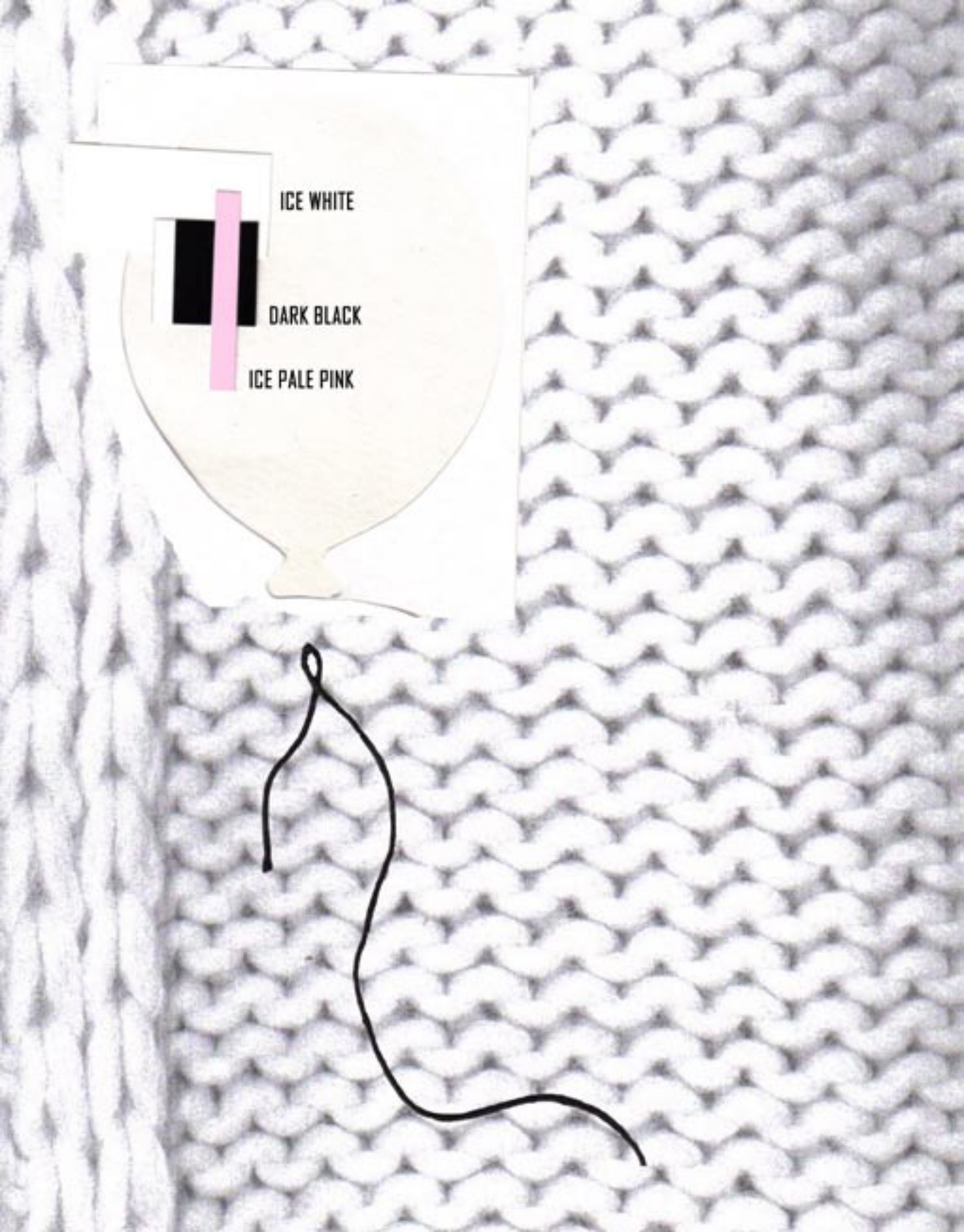


TRICOT COLLECTION "BLOW UP" FALL/WINTER 06-07







EDGE 1



CROCHET-WORK B



EDGE 2



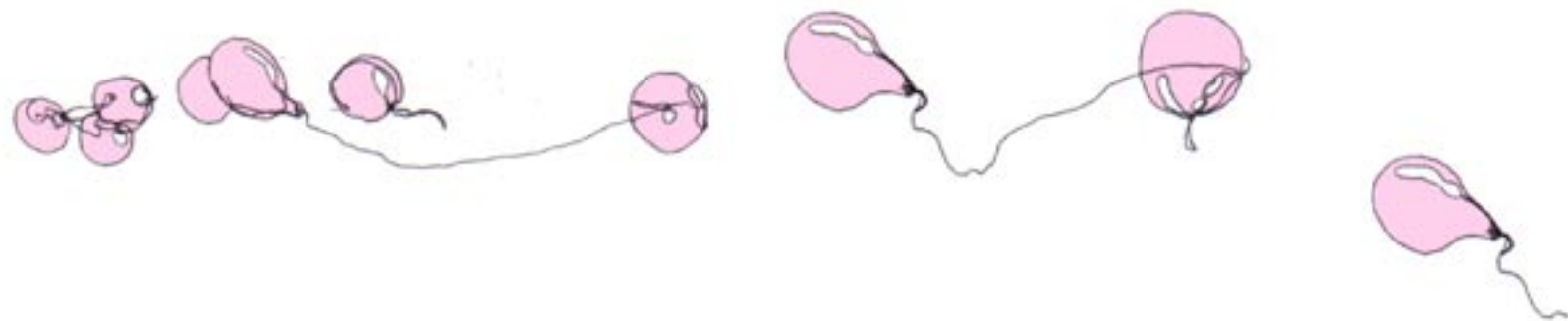
STITCH A



EDGE 3



CROCHET-WORK A



Col: Self Edge, Yarn 1, Gauge 1,5

Center: Yarn 1, Gauge 7

Sleeves + Pocket: Yarn 1, Gauge 1,5, C.W. A

End Sleeves: Yarn 1, Gauge 1,5, 2x2 Rib

End: Self Edge

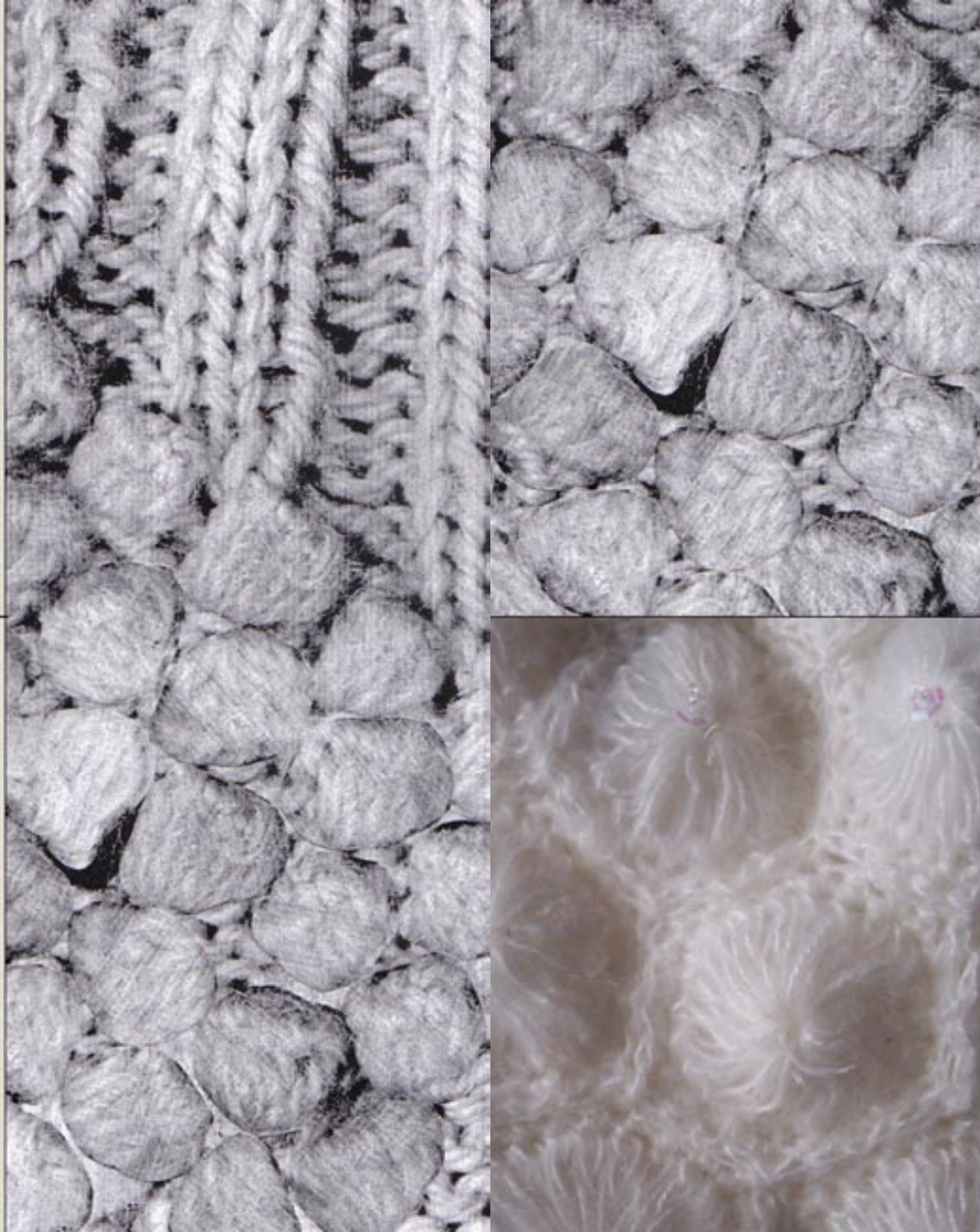




Collar + Pockets + Belt: Yarn I, Gauge 1.5, C.W.A
 Center: Yarn I, Gauge 1.5, Self Edge
 Sleeves: Yarn I, Gauge 1.5, 2x6 Rib



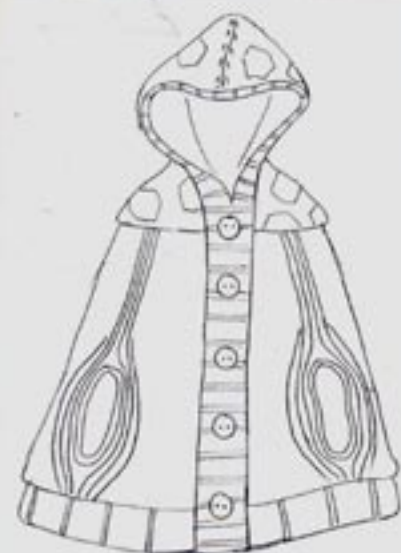
Collar + Pockets + Belt: Yarn I, Gauge 1.5, C.W. A. Self Edge
 Center: Yarn I, Gauge 1.5, Self Edge
 Sleeves: Yarn I, Gauge 1.5, 2x2 Rib



Cap + Shoulders:
 Yarn I, Gauge 1.5, C.W.A, Edge 3
 Center:
 Yarn I, Gauge 1.5, Cable Stitch



Sock Top: Yarn I, Gauge 1.5, 2x4 Rib
 Sock Center: Yarn I, Gauge 1.5, C.W.A



Front: Yarn I, Gauge 7, 2x2 Rib
 Hood + Shoulders: Yarn I, Gauge 1.5, C.W.B
 Center: Yarn I, Gauge 1.5
 End: Yarn I, Gauge 1.5, 2x6 Rib
 Sock: Yarn I, Gauge 1.5, C.W.B, Edge 1





Col Scarf: Yarn 1, Gauge 1.5
 Border: Yarn 1, Gauge 1.5, 2x6 Rib
 Center: Yarn 1, Gauge 1.5, C.W.B
 End Sleeves: Yarn 1, Gauge 1.5, 2x2 Rib
 Bottom border: Yarn 1, Gauge 1.5, 2x6 Rib



Collar: Yarn 1, Gauge 1.5, Self Edge
 Center: Yarn 1, Gauge 1.5, Cable Stitch and Edge 2, Self Edge
 Border Sleeves: Yarn 1, Gauge 1.5, 2x2 Rib



Collar Scarf: Yarn 1, Gauge 1.5, C.W.B, Edge 1
 Collar Border: Yarn 1, Gauge 1.5, 2x6 Rib
 Center: Yarn 1, Gauge 1.5
 Border Sleeves: Yarn 1, Gauge 1.5, 2x2 Rib
 Bottom Border: Yarn 1, Gauge 1.5, 2x2 Rib



Collar Scarf: Yarn 1, Gauge 1.5, Self Edge
 Center: Yarn 1, Gauge 1.5, C.W.B, Self Edge
 Sleeves border: Edge 1

Top Border: Yarn I, Gauge 7, 2x4 Rib
Center: Yarn I, Gauge 1.5, Cable Stitch, Edge 3
Pockets: Yarn I, Gauge 1.5
Bottom Border: Yarn I, Gauge 7, 2x6 Rib





Top Border: Yarn 1, Gauge 7, 2x4 Rib
Center: Yarn 1, Gauge 1.5, Cable Stitch, Edge 3
Bottom Border: Yarn 1, Gauge 7, 2x4 Rib



Coll: Yarn 1, Gauge 1.5, C.W.B, Edge 1
Center: Yarn 2, Gauge 7
Sleeves: Yarn 1, Gauge 1.5, C.W.B, Edge 1
Bottom Border: Yarn 2, Gauge 7, 2x2 Rib



Center: Yarn 2, Gauge 7, Stitch A
Hood Border: Tubular
Sleeves Border: Yarn 1, Gauge 1.5, 2x4 Rib
Bottom Border: Yarn 1, Gauge 1.5, 2x4 Rib



Coll Border: Yarn 1, Gauge 1.5, 2x2 Rib
Coll + Sleeves: Yarn 1, Gauge 1.5, C.W.A
Center: Yarn 2, Gauge 7
Bottom Border: Yarn 2, Gauge 7, 2x4 Rib
Sleeves Border: Yarn 1, Gauge 1.5, 2x2 Rib



Coll: Yarn 2, Gauge 7, Edge 2
 Sleeves + Center Border: Yarn 1, Gauge 1.5, 2x2 Rib
 Skirt: Yarn 1, Gauge 1.5, C.W.A, Self Edge



Coll: Yarn 2, Gauge 7, Edge 2
 Center: Yarn 2, Gauge 7, Self Edge



Coll: Yarn 2, Gauge 7, Edge 2
 Center + Top Sleeves: Yarn 2, Gauge 7, Self Edge
 Sleeves: Yarn 2, Gauge 7, Stitch A, Tubular



Col: Yarn 1, Gauge 1.5, Edge 2
 Sleeves Border: Yarn 1, Gauge 1.5, 2x4 Rib
 Center: Yarn 2, Gauge 7
 Bottom Border: Yarn 1, Gauge 1.5, 2x4 Rib



Tricot collection Fall/Winter 06/07 by Elaine Hoorn